

SCS ENGINEERS

Formerly Tracer Environmental Sciences & Technologies, Inc., now a part of SCS Engineers.

August 11, 2017

TO:

Southern California Gas Company
Centralized Correspondence
PO Box 3150
San Dimas, CA 91773

FROM:

Nathan Eady
Project Manager
SCS Engineers
2601 Skyway Drive, Suite A1
Santa Maria, CA 93455

RE: Line 901 and Line 903 Replacement Project

**SITE: 123.4- Mile Pipeline Corridor
Santa Barbara, San Luis Obispo, and Kern County, California**

To whom it may concern:

SCS Engineers (SCS), on behalf of Plains All American Pipeline, LP (Plains), would like to inform you that a feasibility analysis and corresponding permitting are underway for the potential repair and/or replacement of Line 901 and Line 903 oil bearing pipelines throughout portions of Santa Barbara, San Luis Obispo, and Kern Counties. The proposed project is as follows:

Plains is proposing to partially or wholly replace the existing Line 901 and 903 pipelines from Las Flores Canyon in the Gaviota region of Santa Barbara County to the Pentland Delivery Point in the Maricopa region of Kern County; this corridor spans approximately 123 miles. Subsurface disturbance can include, but will not be limited to, trenching to depths of seven (7) feet or greater and boring to depths of twenty (20) feet or greater. Enclosed please find a Vicinity Map of the current pipeline locations for your reference. If requested, a GIS shapefile or Google KMZ can be provided to help identify the location of the Project more accurately and its proximity to your existing utility infrastructure. Please feel free to contact Nathan Eady with any questions at (805) 346-6591.

Sincerely,

Nathan Eady

SCS ENGINEERS

Formerly Tracer Environmental Sciences & Technologies, Inc., now a part of SCS Engineers.

August 11, 2017

TO:

Comcast
2323 Thompson Road
Santa Maria, CA 93455

FROM:

Nathan Eady
Project Manager
SCS Engineers
2601 Skyway Drive, Suite A1
Santa Maria, CA 93455

RE: Line 901 and Line 903 Replacement Project

**SITE: 123.4- Mile Pipeline Corridor
Santa Barbara, San Luis Obispo, and Kern County, California**

To whom it may concern:

SCS Engineers (SCS), on behalf of Plains All American Pipeline, LP (Plains), would like to inform you that a feasibility analysis and corresponding permitting are underway for the potential repair and/or replacement of Line 901 and Line 903 oil bearing pipelines throughout portions of Santa Barbara, San Luis Obispo, and Kern Counties. The proposed project is as follows:

Plains is proposing to partially or wholly replace the existing Line 901 and 903 pipelines from Las Flores Canyon in the Gaviota region of Santa Barbara County to the Pentland Delivery Point in the Maricopa region of Kern County; this corridor spans approximately 123 miles. Subsurface disturbance can include, but will not be limited to, trenching to depths of seven (7) feet or greater and boring to depths of twenty (20) feet or greater. Enclosed please find a Vicinity Map of the current pipeline locations for your reference. If requested, a GIS shapefile or Google KMZ can be provided to help identify the location of the Project more accurately and its proximity to your existing utility infrastructure. Please feel free to contact Nathan Eady with any questions at (805) 346-6591.

Sincerely,

Nathan Eady

SCS ENGINEERS

Formerly Tracer Environmental Sciences & Technologies, Inc., now a part of SCS Engineers.

August 11, 2017

TO:

Pacific Gas and Electric Company
406 Higuera Street
San Luis Obispo, CA 93401

FROM:

Nathan Eady
Project Manager
SCS Engineers
2601 Skyway Drive, Suite A1
Santa Maria, CA 93455

RE: Line 901 and Line 903 Replacement Project

**SITE: 123.4- Mile Pipeline Corridor
Santa Barbara, San Luis Obispo, and Kern County, California**

To whom it may concern:

SCS Engineers (SCS), on behalf of Plains All American Pipeline, LP (Plains), would like to inform you that a feasibility analysis and corresponding permitting are underway for the potential repair and/or replacement of Line 901 and Line 903 oil bearing pipelines throughout portions of Santa Barbara, San Luis Obispo, and Kern Counties. The proposed project is as follows:

Plains is proposing to partially or wholly replace the existing Line 901 and 903 pipelines from Las Flores Canyon in the Gaviota region of Santa Barbara County to the Pentland Delivery Point in the Maricopa region of Kern County; this corridor spans approximately 123 miles. Subsurface disturbance can include, but will not be limited to, trenching to depths of seven (7) feet or greater and boring to depths of twenty (20) feet or greater. Enclosed please find a Vicinity Map of the current pipeline locations for your reference. If requested, a GIS shapefile or Google KMZ can be provided to help identify the location of the Project more accurately and its proximity to your existing utility infrastructure. Please feel free to contact Nathan Eady with any questions at (805) 346-6591.

Sincerely,

Nathan Eady

SCS ENGINEERS

Formerly Tracer Environmental Sciences & Technologies, Inc., now a part of SCS Engineers.

August 11, 2017

TO:

Southern California Edison
PO Box 800
Rosemead, CA 91770

FROM:

Nathan Eady
Project Manager
SCS Engineers
2601 Skyway Drive, Suite A1
Santa Maria, CA 93455

RE: Line 901 and Line 903 Replacement Project

**SITE: 123.4- Mile Pipeline Corridor
Santa Barbara, San Luis Obispo, and Kern County, California**

To whom it may concern:

SCS Engineers (SCS), on behalf of Plains All American Pipeline, LP (Plains), would like to inform you that a feasibility analysis and corresponding permitting are underway for the potential repair and/or replacement of Line 901 and Line 903 oil bearing pipelines throughout portions of Santa Barbara, San Luis Obispo, and Kern Counties. The proposed project is as follows:

Plains is proposing to partially or wholly replace the existing Line 901 and 903 pipelines from Las Flores Canyon in the Gaviota region of Santa Barbara County to the Pentland Delivery Point in the Maricopa region of Kern County; this corridor spans approximately 123 miles. Subsurface disturbance can include, but will not be limited to, trenching to depths of seven (7) feet or greater and boring to depths of twenty (20) feet or greater. Enclosed please find a Vicinity Map of the current pipeline locations for your reference. If requested, a GIS shapefile or Google KMZ can be provided to help identify the location of the Project more accurately and its proximity to your existing utility infrastructure. Please feel free to contact Nathan Eady with any questions at (805) 346-6591.

Sincerely,

Nathan Eady

SCS ENGINEERS

Formerly Tracer Environmental Sciences & Technologies, Inc., now a part of SCS Engineers.

August 11, 2017

TO:

Charter Communications
270 Bridge Street
San Luis Obispo, CA 93401

FROM:

Nathan Eady
Project Manager
SCS Engineers
2601 Skyway Drive, Suite A1
Santa Maria, CA 93455

RE: Line 901 and Line 903 Replacement Project

**SITE: 123.4- Mile Pipeline Corridor
Santa Barbara, San Luis Obispo, and Kern County, California**

To whom it may concern:

SCS Engineers (SCS), on behalf of Plains All American Pipeline, LP (Plains), would like to inform you that a feasibility analysis and corresponding permitting are underway for the potential repair and/or replacement of Line 901 and Line 903 oil bearing pipelines throughout portions of Santa Barbara, San Luis Obispo, and Kern Counties. The proposed project is as follows:

Plains is proposing to partially or wholly replace the existing Line 901 and 903 pipelines from Las Flores Canyon in the Gaviota region of Santa Barbara County to the Pentland Delivery Point in the Maricopa region of Kern County; this corridor spans approximately 123 miles. Subsurface disturbance can include, but will not be limited to, trenching to depths of seven (7) feet or greater and boring to depths of twenty (20) feet or greater. Enclosed please find a Vicinity Map of the current pipeline locations for your reference. If requested, a GIS shapefile or Google KMZ can be provided to help identify the location of the Project more accurately and its proximity to your existing utility infrastructure. Please feel free to contact Nathan Eady with any questions at (805) 346-6591.

Sincerely,

Nathan Eady

SCS ENGINEERS

Formerly Tracer Environmental Sciences & Technologies, Inc., now a part of SCS Engineers.

August 11, 2017

TO:

Frontier Communications
3630 State Street
Santa Barbara, CA 93105

FROM:

Nathan Eady
Project Manager
SCS Engineers
2601 Skyway Drive, Suite A1
Santa Maria, CA 93455

RE: Line 901 and Line 903 Replacement Project

**SITE: 123.4- Mile Pipeline Corridor
Santa Barbara, San Luis Obispo, and Kern County, California**

To whom it may concern:

SCS Engineers (SCS), on behalf of Plains All American Pipeline, LP (Plains), would like to inform you that a feasibility analysis and corresponding permitting are underway for the potential repair and/or replacement of Line 901 and Line 903 oil bearing pipelines throughout portions of Santa Barbara, San Luis Obispo, and Kern Counties. The proposed project is as follows:

Plains is proposing to partially or wholly replace the existing Line 901 and 903 pipelines from Las Flores Canyon in the Gaviota region of Santa Barbara County to the Pentland Delivery Point in the Maricopa region of Kern County; this corridor spans approximately 123 miles. Subsurface disturbance can include, but will not be limited to, trenching to depths of seven (7) feet or greater and boring to depths of twenty (20) feet or greater. Enclosed please find a Vicinity Map of the current pipeline locations for your reference. If requested, a GIS shapefile or Google KMZ can be provided to help identify the location of the Project more accurately and its proximity to your existing utility infrastructure. Please feel free to contact Nathan Eady with any questions at (805) 346-6591.

Sincerely,

Nathan Eady

SCS ENGINEERS

Formerly Tracer Environmental Sciences & Technologies, Inc., now a part of SCS Engineers.

August 11, 2017

TO:

Verizon
Centralized Correspondence
PO Box 291089
Columbia, SC 29229

FROM:

Nathan Eady
Project Manager
SCS Engineers
2601 Skyway Drive, Suite A1
Santa Maria, CA 93455

RE: Line 901 and Line 903 Replacement Project

**SITE: 123.4- Mile Pipeline Corridor
Santa Barbara, San Luis Obispo, and Kern County, California**

To whom it may concern:

SCS Engineers (SCS), on behalf of Plains All American Pipeline, LP (Plains), would like to inform you that a feasibility analysis and corresponding permitting are underway for the potential repair and/or replacement of Line 901 and Line 903 oil bearing pipelines throughout portions of Santa Barbara, San Luis Obispo, and Kern Counties. The proposed project is as follows:

Plains is proposing to partially or wholly replace the existing Line 901 and 903 pipelines from Las Flores Canyon in the Gaviota region of Santa Barbara County to the Pentland Delivery Point in the Maricopa region of Kern County; this corridor spans approximately 123 miles. Subsurface disturbance can include, but will not be limited to, trenching to depths of seven (7) feet or greater and boring to depths of twenty (20) feet or greater. Enclosed please find a Vicinity Map of the current pipeline locations for your reference. If requested, a GIS shapefile or Google KMZ can be provided to help identify the location of the Project more accurately and its proximity to your existing utility infrastructure. Please feel free to contact Nathan Eady with any questions at (805) 346-6591.

Sincerely,

Nathan Eady

SCS ENGINEERS

Formerly Tracer Environmental Sciences & Technologies, Inc., now a part of SCS Engineers.

August 11, 2017

TO:

AT&T
208 South Akard St
Dallas, TX 75202

FROM:

Nathan Eady
Project Manager
SCS Engineers
2601 Skyway Drive, Suite A1
Santa Maria, CA 93455

RE: Line 901 and Line 903 Replacement Project

**SITE: 123.4- Mile Pipeline Corridor
Santa Barbara, San Luis Obispo, and Kern County, California**

To whom it may concern:

SCS Engineers (SCS), on behalf of Plains All American Pipeline, LP (Plains), would like to inform you that a feasibility analysis and corresponding permitting are underway for the potential repair and/or replacement of Line 901 and Line 903 oil bearing pipelines throughout portions of Santa Barbara, San Luis Obispo, and Kern Counties. The proposed project is as follows:

Plains is proposing to partially or wholly replace the existing Line 901 and 903 pipelines from Las Flores Canyon in the Gaviota region of Santa Barbara County to the Pentland Delivery Point in the Maricopa region of Kern County; this corridor spans approximately 123 miles. Subsurface disturbance can include, but will not be limited to, trenching to depths of seven (7) feet or greater and boring to depths of twenty (20) feet or greater. Enclosed please find a Vicinity Map of the current pipeline locations for your reference. If requested, a GIS shapefile or Google KMZ can be provided to help identify the location of the Project more accurately and its proximity to your existing utility infrastructure. Please feel free to contact Nathan Eady with any questions at (805) 346-6591.

Sincerely,

Nathan Eady

SCS ENGINEERS

Formerly Tracer Environmental Sciences & Technologies, Inc., now a part of SCS Engineers.

August 11, 2017

TO:

Cox
3303 State Street
Santa Barbara, CA 93105

FROM:

Nathan Eady
Project Manager
SCS Engineers
2601 Skyway Drive, Suite A1
Santa Maria, CA 93455

RE: Line 901 and Line 903 Replacement Project

**SITE: 123.4- Mile Pipeline Corridor
Santa Barbara, San Luis Obispo, and Kern County, California**

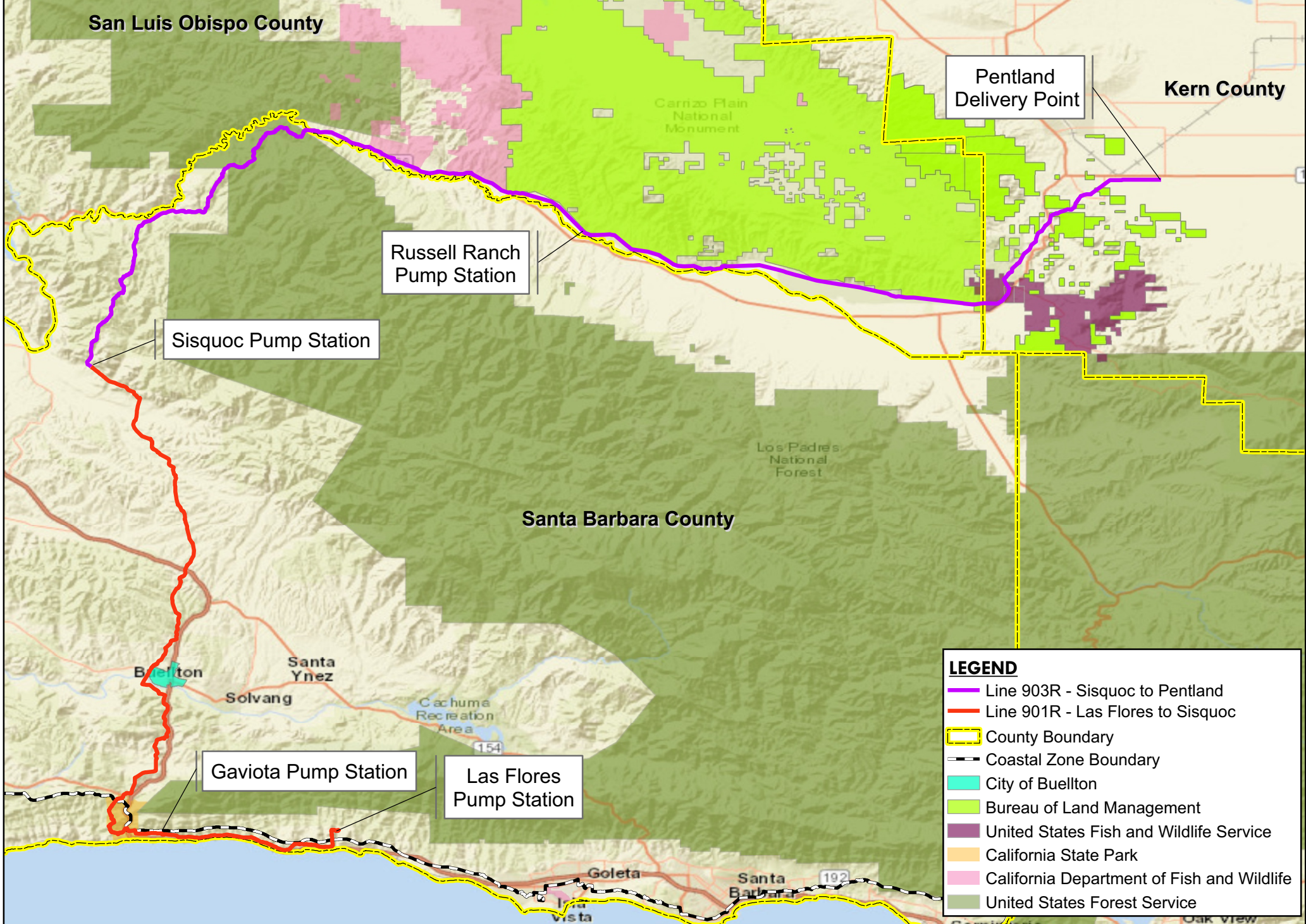
To whom it may concern:

SCS Engineers (SCS), on behalf of Plains All American Pipeline, LP (Plains), would like to inform you that a feasibility analysis and corresponding permitting are underway for the potential repair and/or replacement of Line 901 and Line 903 oil bearing pipelines throughout portions of Santa Barbara, San Luis Obispo, and Kern Counties. The proposed project is as follows:

Plains is proposing to partially or wholly replace the existing Line 901 and 903 pipelines from Las Flores Canyon in the Gaviota region of Santa Barbara County to the Pentland Delivery Point in the Maricopa region of Kern County; this corridor spans approximately 123 miles. Subsurface disturbance can include, but will not be limited to, trenching to depths of seven (7) feet or greater and boring to depths of twenty (20) feet or greater. Enclosed please find a Vicinity Map of the current pipeline locations for your reference. If requested, a GIS shapefile or Google KMZ can be provided to help identify the location of the Project more accurately and its proximity to your existing utility infrastructure. Please feel free to contact Nathan Eady with any questions at (805) 346-6591.

Sincerely,

Nathan Eady





Certificate Of Mailing

This Certificate of Mailing provides evidence that mail has been presented to USPS® for mailing. This form may be used for domestic and international mail.

From: SCS Engineers
2601 Skyway Drive STE A
Santa Maria CA 93455

To: So. Cal Edison
PO Box 800
Rosemead CA 91770

U.S. POSTAGE
PAID
SANTA MARIA, CA
93454
AUG 14 17
AMOUNT
\$1.35
R2304M112185-21

PS Form 3817, April 2007 PSN 7530-02-000-9065



Certificate Of Mailing

This Certificate of Mailing provides evidence that mail has been presented to USPS® for mailing. This form may be used for domestic and international mail.

From: SCS Engineers
2601 Skyway Dr. STE A
Santa Maria CA 93455

To: AT&T
208 South Meard St
Dallas TX 75202

U.S. POSTAGE
PAID
SANTA MARIA, CA
93454
AUG 14 17
AMOUNT
\$1.35
R2304M112185-21

PS Form 3817, April 2007 PSN 7530-02-000-9065



Certificate Of Mailing

This Certificate of Mailing provides evidence that mail has been presented to USPS® for mailing. This form may be used for domestic and international mail.

From: SCS Engineers
2601 Skyway Dr. STE A
Santa Maria CA 93455

To: Comcast
2323 Thompson Rd
Santa Maria CA 93455

U.S. POSTAGE
PAID
SANTA MARIA, CA
93454
AUG 14 17
AMOUNT
\$1.35
R2304M112185-21

PS Form 3817, April 2007 PSN 7530-02-000-9065



Certificate Of M

This Certificate of Mailing provides evidence that mail has been presented to USPS® for This form may be used for domestic and international mail.

From: SCS Engineers
 2601 Skyway pr #A1
 Santa Maria CA 93455

To: Charter
 270 Bridge St
 San Luis Obispo
 CA 93401

PS Form 3817, April 2007 PSN 7530-02-000-9065

U.S. POSTAGE
 PAID
 SANTA MARIA, CA
 93454
 AUG 14 17
 AMOUNT
\$1.35
 R2304M112185-21



Certificate Of M

This Certificate of Mailing provides evidence that mail has been presented to USPS® for This form may be used for domestic and international mail.

From: SCS Engineers
 2601 Skyway pr. #A1
 Santa Maria CA 93455

To: P&B
 400 Figueroa St
 SLO CA 93401

PS Form 3817, April 2007 PSN 7530-02-000-9065

U.S. POSTAGE
 PAID
 SANTA MARIA, CA
 93454
 AUG 14 17
 AMOUNT
\$1.35
 R2304M112185-21



Certificate Of M

This Certificate of Mailing provides evidence that mail has been presented to USPS® for This form may be used for domestic and international mail.

From: SCS Engineers
 2601 Skyway pr. #A1
 Santa Maria CA 93455

To: Verizon
 centralized correspondence
 PO BOX 291089
 Columbia SC 292

PS Form 3817, April 2007 PSN 7530-02-000-9065

U.S. POSTAGE
 PAID
 SANTA MARIA, CA
 93454
 AUG 14 17
 AMOUNT
\$1.35
 R2304M112185-21



Certificate Of Mailing

This Certificate of Mailing provides evidence that mail has been presented to USPS® for mailing. This form may be used for domestic and international mail.

From: SCS Engineers
2401 Skyway Dr. Ste A
Santa Maria CA 93454
To: Cox
3303 State St.
Santa Barbara CA 9

U.S. POSTAGE
PAID
SANTA MARIA, CA
93454
AUG 14 17
AMOUNT
\$1.35
R2304M112185-21

PS Form 3817, April 2007 PSN 7530-02-000-9065



Certificate Of Mailing

This Certificate of Mailing provides evidence that mail has been presented to USPS® for mailing. This form may be used for domestic and international mail.

From: SCS Engineers
2401 Skyway Drive A1
Santa Maria CA 93454
To: Frontier Communications
3430 State St.
Santa Barbara CA
9310

U.S. POSTAGE
PAID
SANTA MARIA, CA
93454
AUG 14 17
AMOUNT
\$1.35
R2304M112185-21

PS Form 3817, April 2007 PSN 7530-02-000-9065



Certificate Of Mailing

This Certificate of Mailing provides evidence that mail has been presented to USPS® for mailing. This form may be used for domestic and international mail.

From: SCS Engineers
2401 Skyway Dr. Ste A
Santa Maria CA 93454
To: So Cal Gas Co.
PO BOX 3150
San Dimas CA 91773

U.S. POSTAGE
PAID
SANTA MARIA, CA
93454
AUG 14 17
AMOUNT
\$1.35
R2304M112185-21

PS Form 3817, April 2007 PSN 7530-02-000-9065